



## MLC803K-SQB 罐体秤 电子地磅 剪切梁称重传感器 10ton

型号: MLC803K-SQB

类别: 剪切梁称重传感器

额定负载: 0~0.25/0.5/1/1.5/2/2.5/3/5/7.5/10ton

产品尺寸: 130\*31.8\*31.8mm, 171.5\*38.1\*38.1mm, 222.3\*50.8\*50.8mm

安全过载: 120%;极限过载: 150%

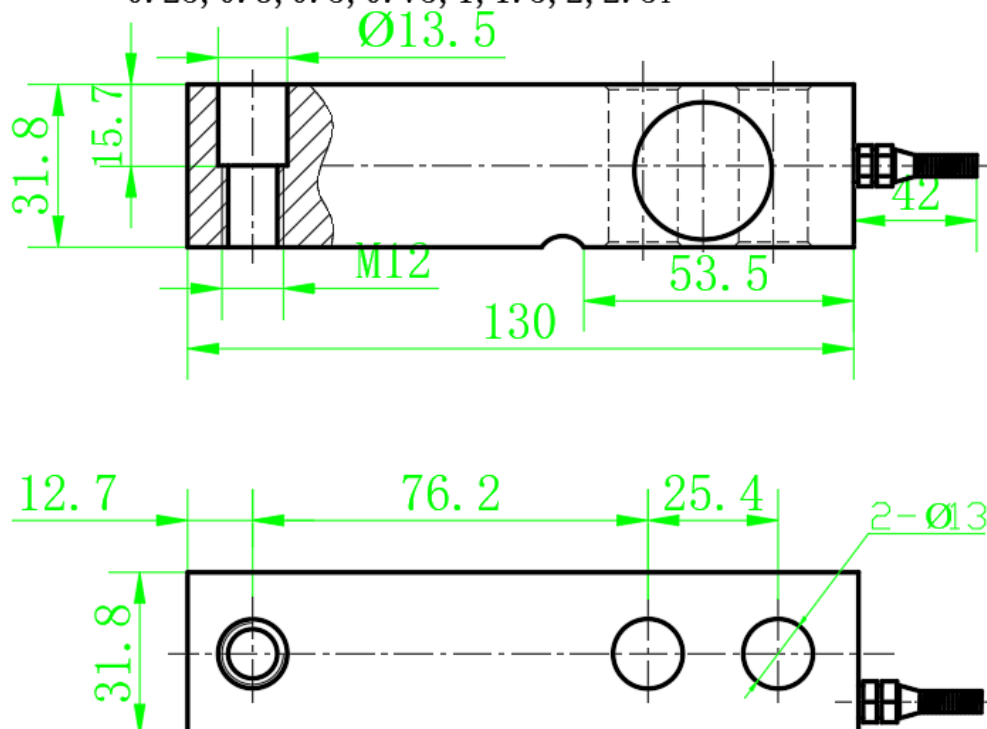
材质: 合金钢、不锈钢

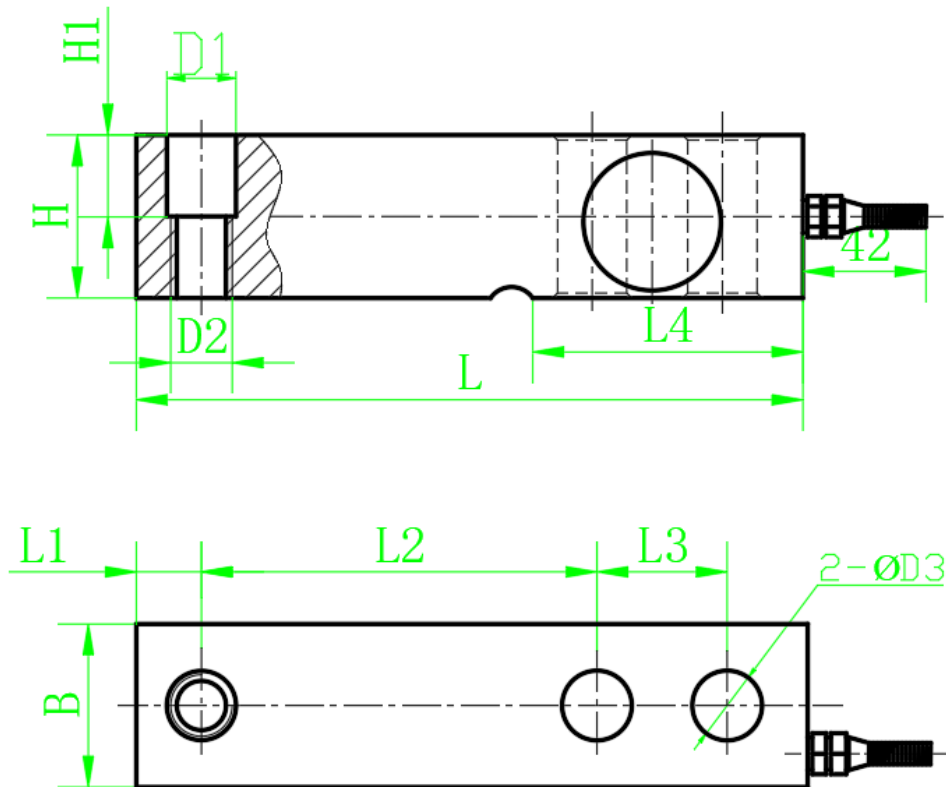
适用范围: 平台秤、喂料秤、皮带秤、叉车秤、包装秤、配料秤、工业称重



MLC803-SQB

0.25, 0.3, 0.5, 0.75, 1, 1.5, 2, 2.5T





LAOD	L	L1	L2	L3	L4	H/B	H1	D1	D2	D3
0.25~ 2.5T	130	12.7	76.2	25.4	53.5	31.8	15.7	13.5	M12*1.5	13
3~ 5T	171.5	19	95.3	38.1	72.5	20	38.1	20	M18*1.5	20
7.5-10T	225.5	25.3	124	50.8	102	50.8	25.4	27	M24*2	27

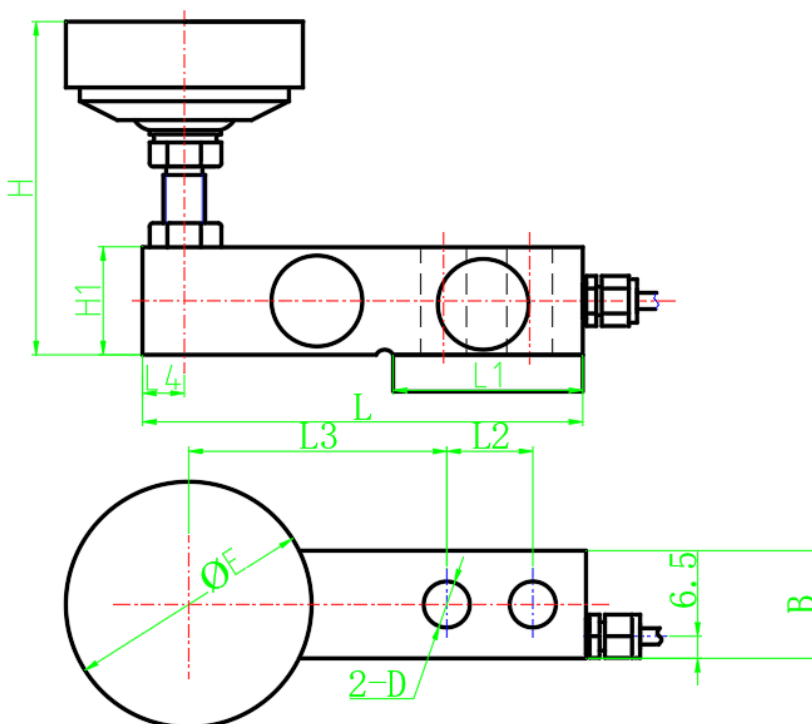
130\*31.8\*31.8mm, 171.5\*38.1\*38.1mm, 222.3\*50.8\*50.8mm

其他尺寸

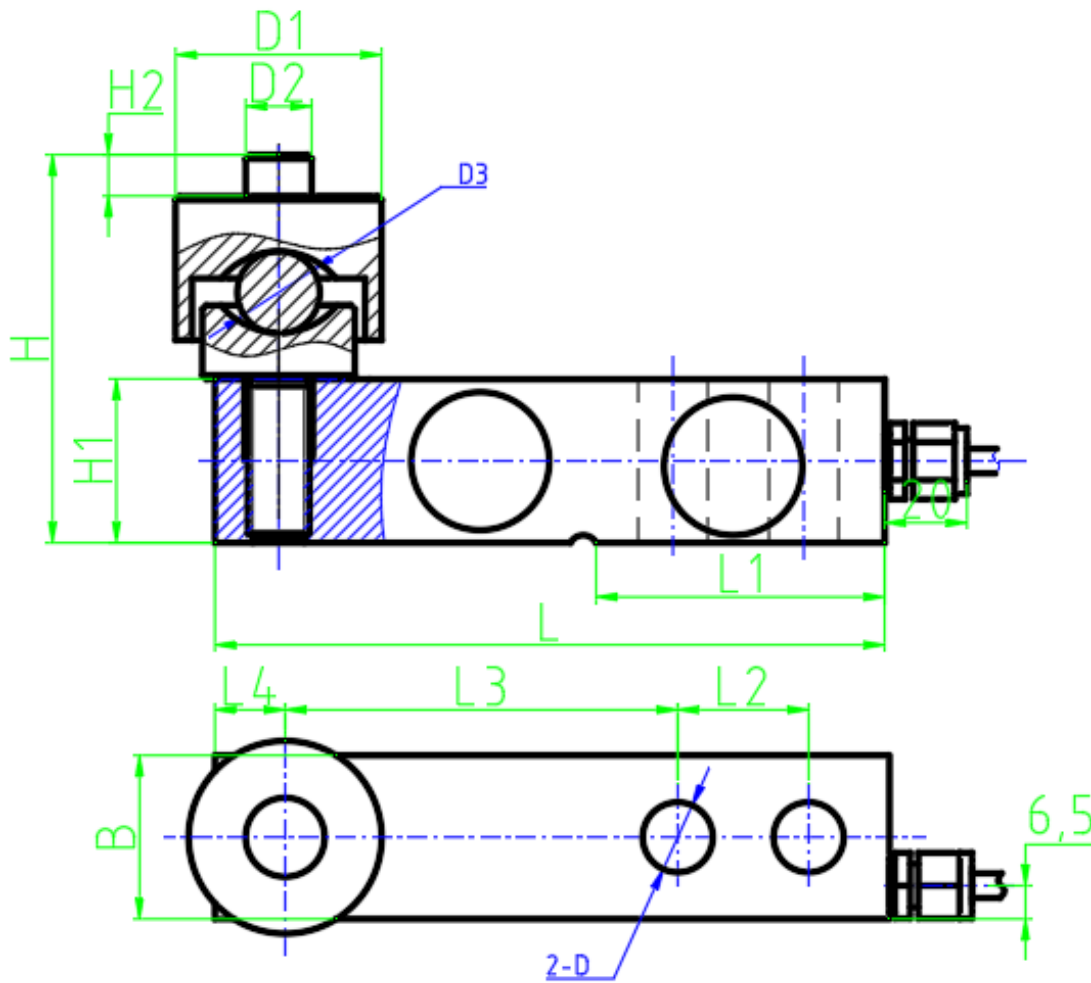
技术参数

综合误差:	0.02%FS	输出电阻:	350±3Ω
额定输出:	2±0.003mv/v, 3±0.003mv/v	绝缘电阻:	≥5000MΩ (100VDC)
非线性:	0.03%FS	激励电压:	9~12VDC
滞后:	0.03%FS	补偿温度:	-10~+40 C
重复性:	0.02%FS	使用温度:	-20~+55 C
蠕变:	0.02%FS/10Min	零点温度影响:	0.03%FS/10°C
零点平衡:	±1%FS	温度灵敏度影响:	0.02%FS/10°C
输入电阻:	350±5Ω	防护等级:	IP66 防护等级

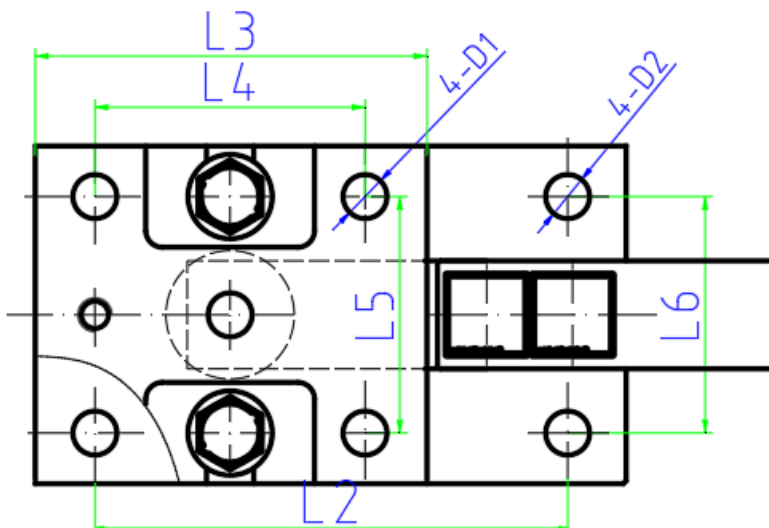
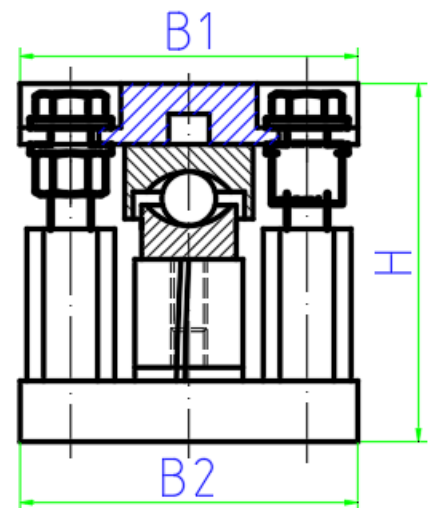
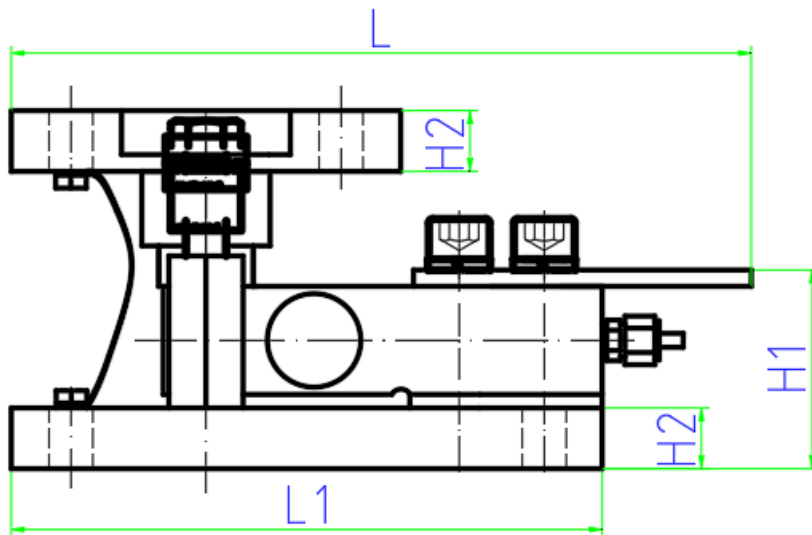
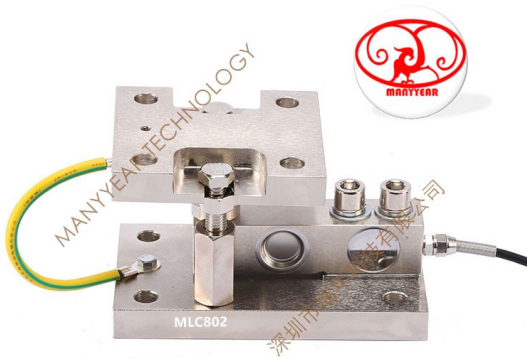
称重模块



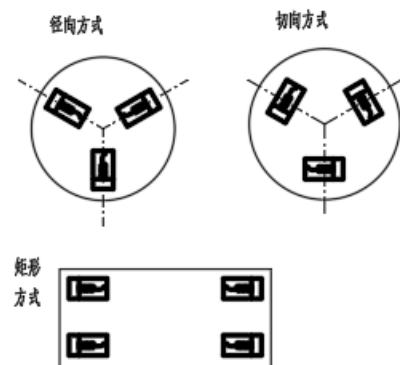
额定载荷 (t) Rated Load	L	L1	12	L3	L4	H1/B	H	C	E
0.25,0.5,0.75,1,1.5,2,25	130	53.5	25.4	76.2	127	31.8	95~105	Ø13	Ø62
3-5T	171.5	72.5	38.1	95.3	19	38.1	04~114	Ø20	Ø62
7.5-10t	225.5	102	50.8	124	25.3	50.8	132-144	Ø27	Ø80



额定载荷 (t) Rated Load	L	L1	L2	L3	L4	H1/B	H	H2	D	D1	D2	D3
0.5, 0.75, 1, 1.5, 2, 2.5	130	53.5	25.4	76.2	12.7	31.8	77.8	12	Ø13	Ø38	Ø12	Ø16
3-5T	171.5	72.5	38.1	95.3	19	38.1	94.1	10	Ø20	Ø50	Ø16	Ø20
7.5-10T	226	102	50.8	124	25.3	50.8	130	10	27	Ø64	Ø20	Ø32



安装方式



量程 (t)	H	H	H2	B1	B2	D1	02	L	L1	L2	L3	L4	L5	L6
0.5,1,15,2,2.5	106	58	18	100	0	Ø13	Ø13	210	175	140	116	80	70	70
3,5	135	73	23	160	160	Ø17	Ø17	270	235	200	5	100	90	90
7-10T	186	93	28.8-38	180	180	Ø26	Ø26	345	310	250	210	150	110	110